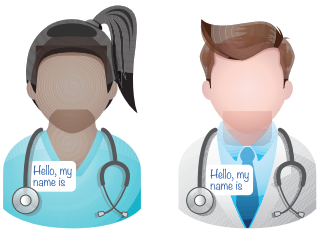


London's ambitions for asthma care for children and young people

Each organisation (primary and community care, acute care, pharmacy, schools) will have a clear named lead who will be responsible and accountable for asthma (which includes children and young people) and the delivery of the following:

As a child with asthma:

PROACTIVE CARE



I should have access to a **named set of professionals working in a network**.



I will **be supported to manage my own asthma** so I am able to lead a life free from symptoms.



I will grow up in an **environment** that has **clean air that is smoke free**.

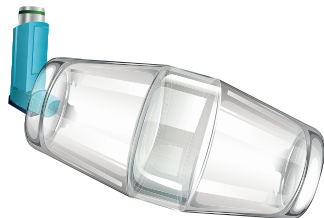


I will have access to an **environment** that is **rich with opportunities to exercise**.

ACCESSIBLE CARE



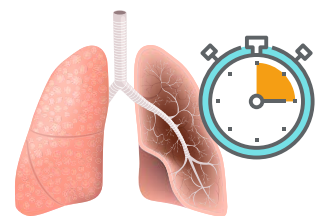
I will have my **diagnosis** and severity of wheeze established quickly.



I will have **prompt access to my inhaler device** and other medicines and asthma care and advice everywhere I go.



I will have access to **immediate medical care, advice and medicines** in an emergency.



I will have access to **high quality, evidence based care** whenever I need it.

CO-ORDINATED CARE



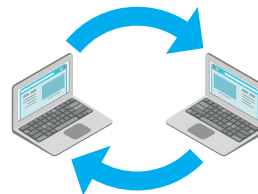
My carer and I will know how to manage my asthma with the help of a written **asthma management plan**.



I will have a **regular structured review**



I will have a **package of care** which meets all my needs including my educational health and well-being.



I will expect all professionals involved in my care will **share clinical information** to **ensure my care is seamless**.



I will move safely into **adult services** when I grow up.