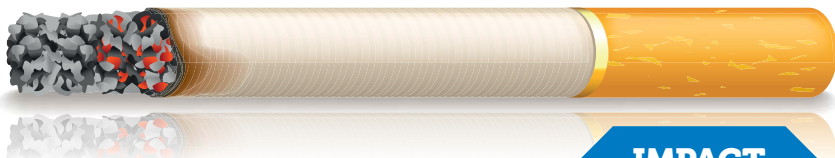


Children and Young People with asthma in London

There are **2,046,000** children and young people under the age of 18 in London.

23% of children and young people with asthma live with someone who smokes



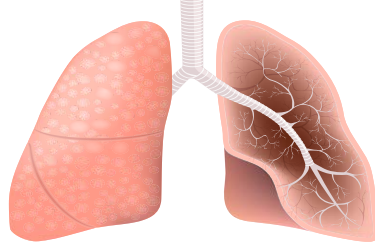
10% have asthma



204,600 in total

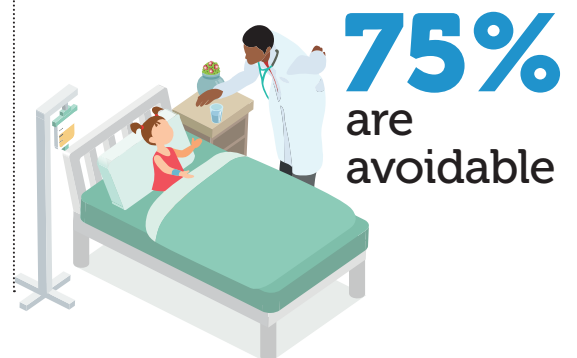
IMPACT

170 children and young people with asthma admitted to intensive care every year



25% of children and young people with asthma had to make an emergency inhaler request last year

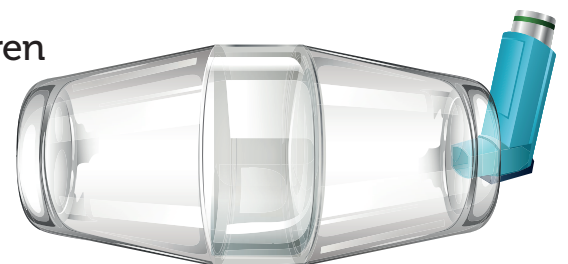
4,255 unplanned hospital admissions per year for children and young people with asthma



75% are avoidable

12 deaths per year of children under the age of 19 years in London

70% of children had an inhaler technique assessment in the last 12 months



48% had asthma management or wheeze plan

36% of children with asthma had flu jab or nasal spray

