



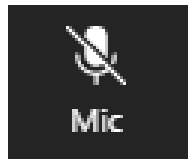
Walking Aid Return and Reuse Scheme at Imperial College Healthcare NHS Trust

Lucinda Thomson, Sustainability Change Lead

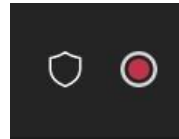
Rosalind Chung, Sustainability Project and Data Manager

 **Quality Improvement**
for our **patients, people and planet**

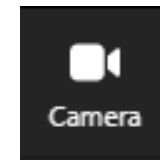
Mute please



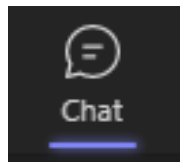
Recording



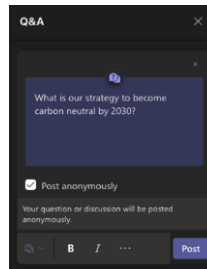
Cameras on!



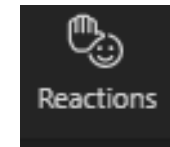
Chat



Q&A



Use reactions



Why?

Green Plan

 <p>01 Cleaner Air</p>	 <p>02 Reduced Energy Use</p>	 <p>03 Smarter Travel</p>	 <p>04 Innovative Water Use</p>
 <p>05 Better Waste Management</p>	 <p>06 Reduced Plastics</p>	 <p>07 Sustainable Medicines</p>	 <p>08 Innovative Care</p>
 <p>09 Sustainable Catering</p>	 <p>10 Greener Facilities</p>	 <p>11 Sustainability Research</p>	 <p>12 Redeveloped Hospitals</p>

Who? Project Team

Project
Lead

QI Coach

Chief Allied
Health
Professional

**Clinical Lead
Physiotherapist
Trauma and
Orthopaedics,
Surgery OT and
Private Patients**

**Head of Adult
Occupational
Therapy and
Physiotherapy**

What is the problem?

1. Staff and patients have limited awareness

2. No consistent method for recording stock

3. No clear process

What is our SMART objective?



Greener NHS ambition

The Net Zero report set a target for 40% reuse of walking aids by 2025, which will contribute to Green Plan delivery for Trusts.

What will we measure?



Increase in...

1. Number of walking aids returned
2. Number of refurbished walking aids being issued to patients



Decrease in...

1. Number of brand new walking aids being issued
2. Carbon emissions associated with walking aids (Greener NHS carbon calculator for walking aids)

Process Mapping

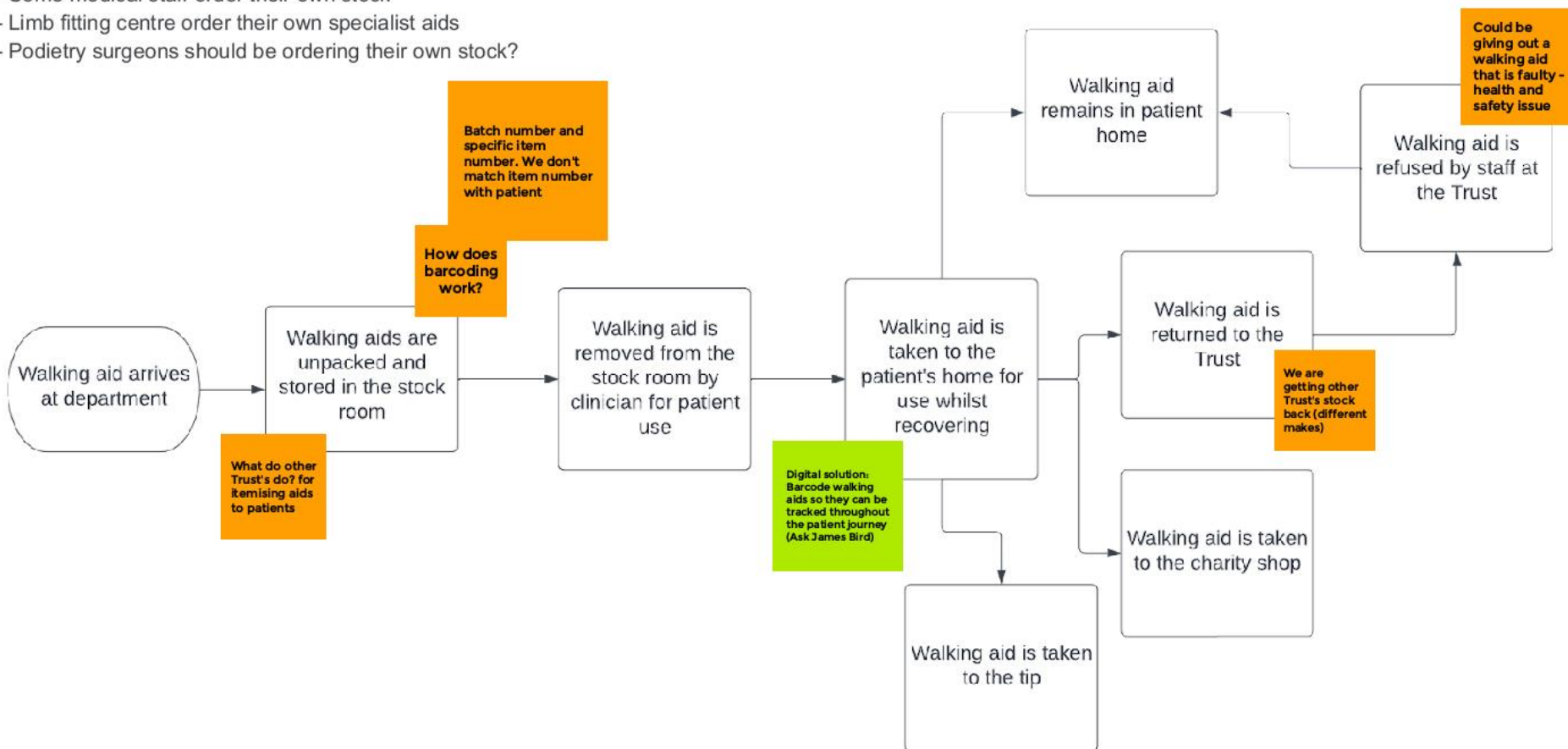
POV: Walking Aid

Points of entry:

- Therapies order small stock through Medequip
- Some medical staff order their own stock
- Limb fitting centre order their own specialist aids
- Podiatry surgeons should be ordering their own stock?

Key:

- Orange = gaps in the process/things we don't know
- Green = change ideas/solutions



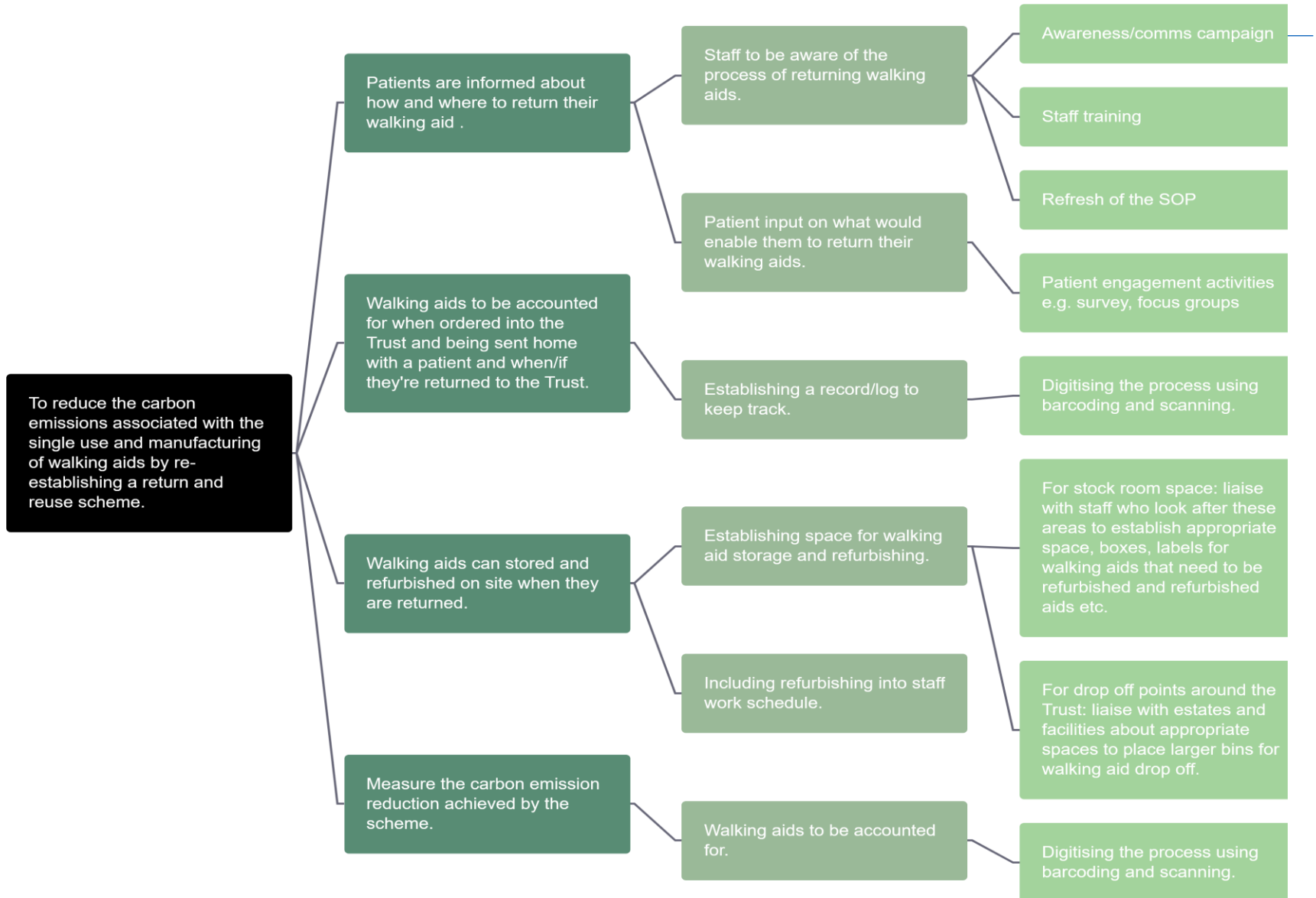
Driver Diagram

AIM

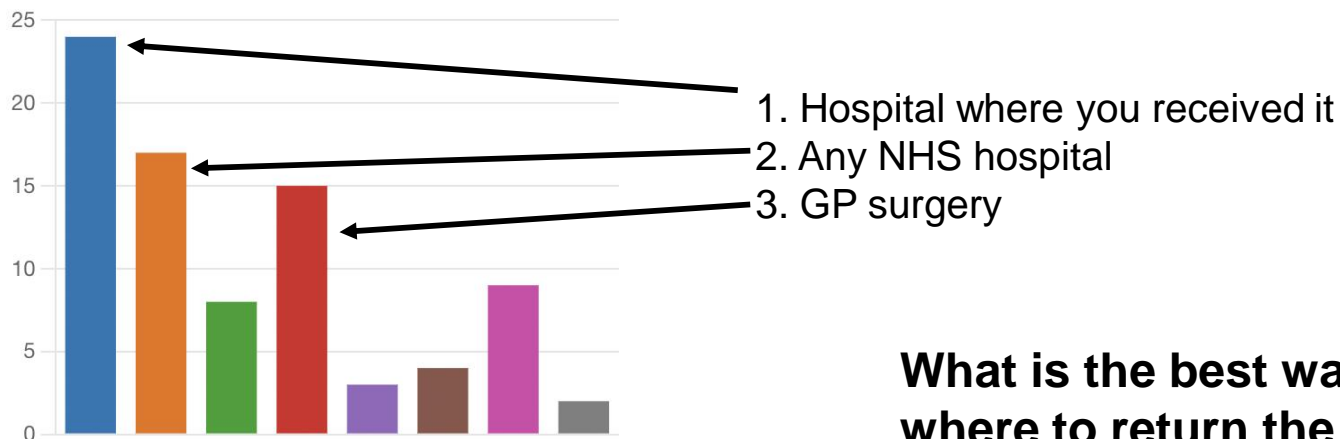
PRIMARY DRIVERS

SECONDARY DRIVERS

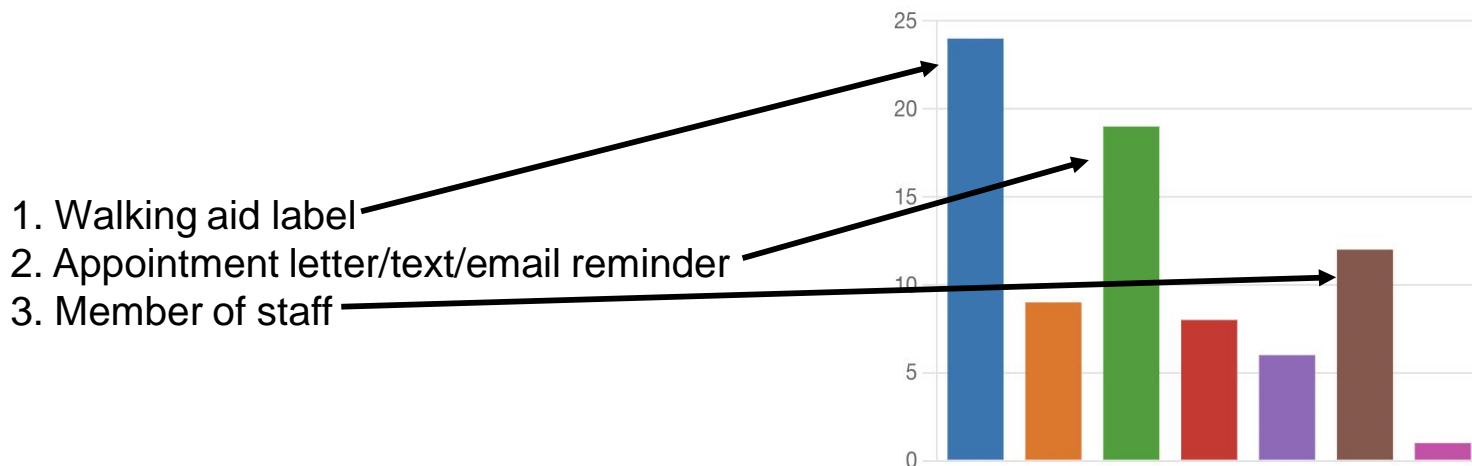
CHANGE IDEAS



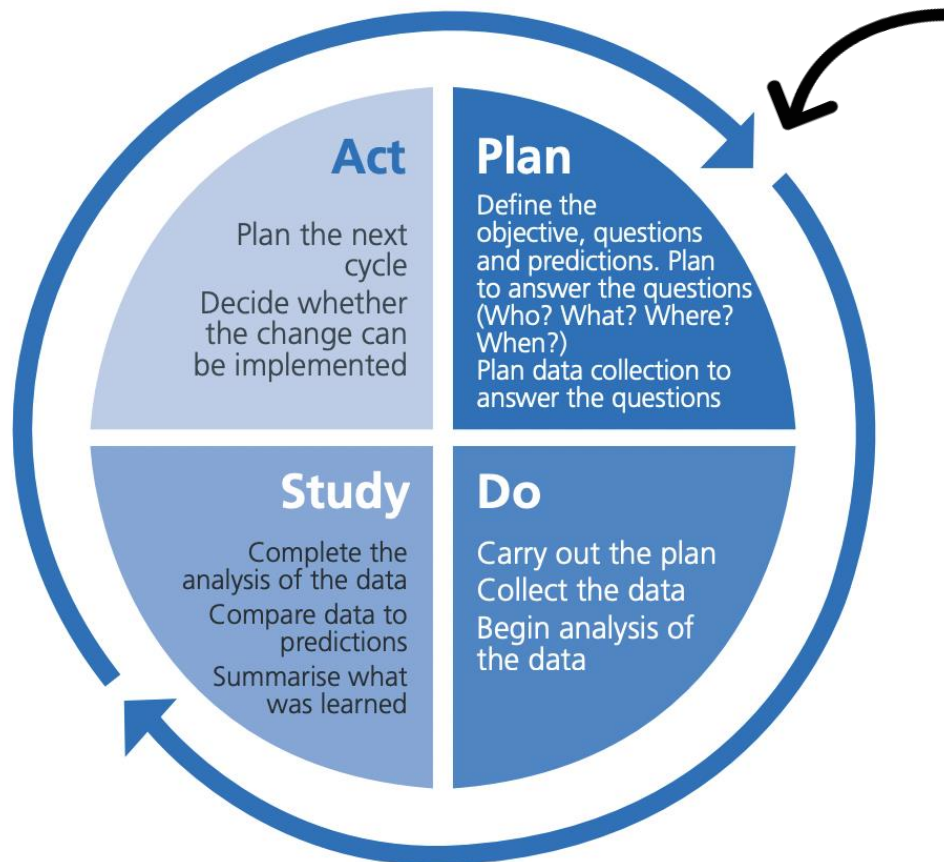
Where would be the easiest for you to return the walking aid?



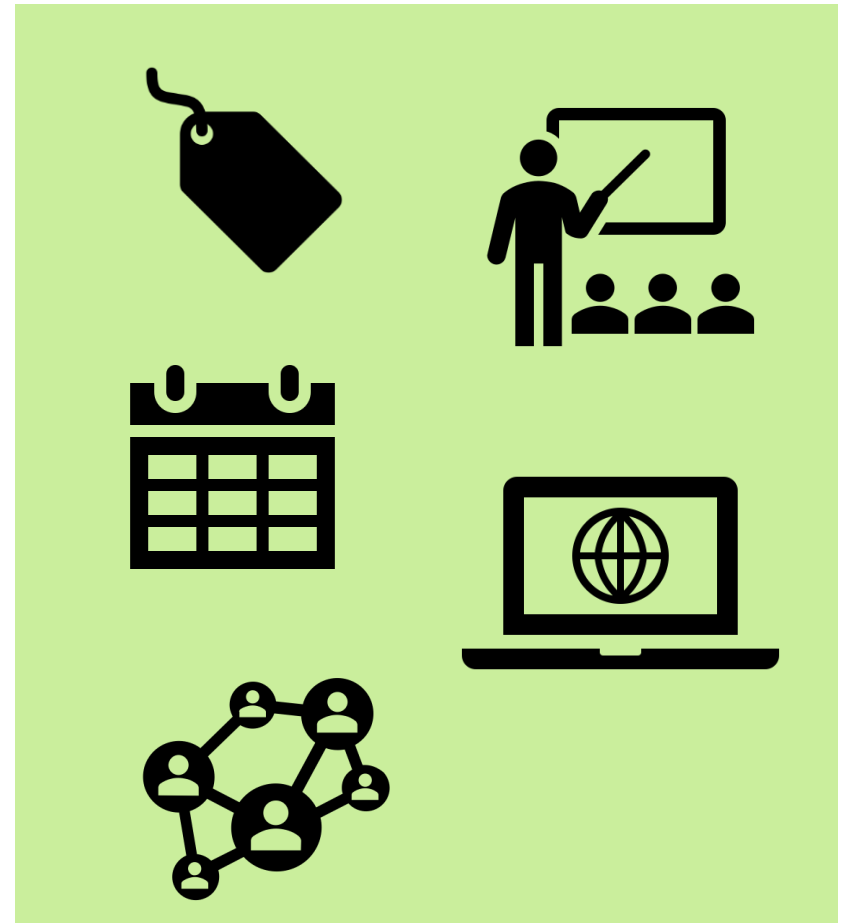
What is the best way to let you know where to return the walking aid?



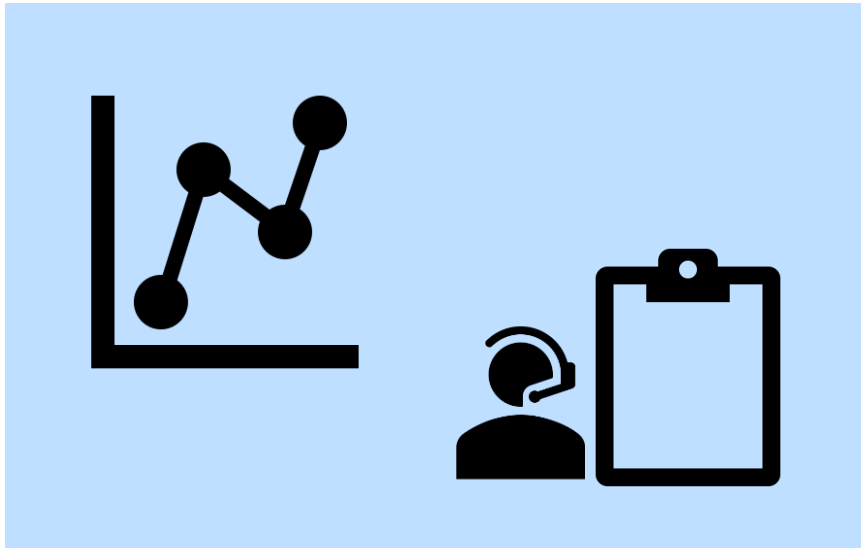
What's next?



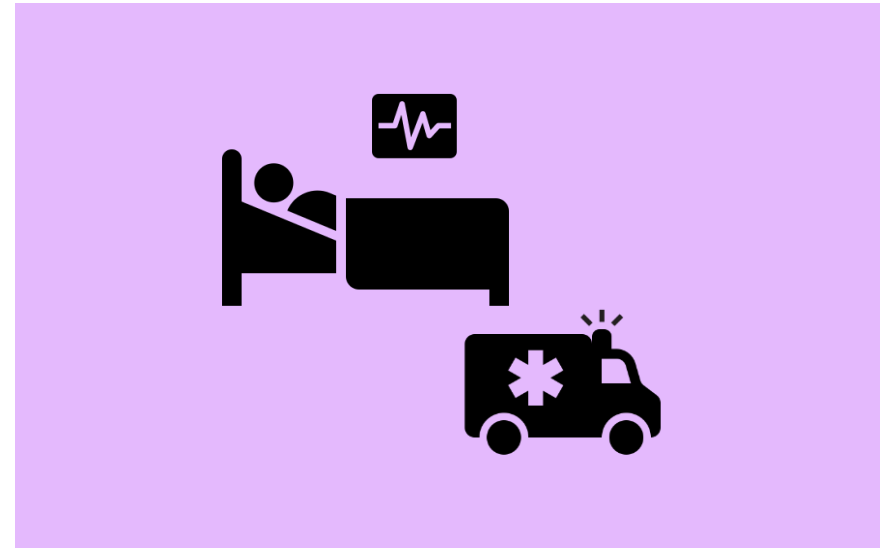
Change ideas we will focus on:



Faced and overcome:



Anticipated:





Evaluation Form



Thank you!

<https://forms.office.com/r/ijuprzYQsb>

Quality
Improvement
for our patients, people and planet

