

# Criteria Led Discharge (CLD) an essential tool to support discharge during COVID 19

Matthew little, Sandra Attwood and Dr Andrew Monro  
(adapted from NHS England and NHS Improvement Guide-



Gloucestershire Hospitals  
NHS Foundation Trust

## Introduction

As NHS staff, we strive to provide the most efficient and high-quality care possible for our patients. The discharge process is key to this, aiming to get patients home as soon as is safe and appropriate for them, and opening up beds for those who need them next. Criteria-led discharge (CLD) is an effective solution which reduces length of stay and empowers staff and patients.

## What is Criteria-Led Discharge?

CLD is a process that empowers a competent member of the multidisciplinary team (MDT) (e.g. junior doctor, registered nurse and therapist) to discharge a patient when they meet pre-agreed clinical criteria for discharge. This removes the need for the patient to wait for the lead clinician (e.g. consultant) to approve discharge.

The lead clinician identifies the discharge criteria; these criteria may be standardised for particular procedures or conditions, but they must also always be adapted and individualised to meet the needs of each patient. The criteria should be discussed with the patient and MDT, and used to identify the expected date of discharge (EDD), all of which is clearly recorded in the patient's notes. If there are no complications or concerns, a competent member of the MDT discharges the patient when the discharge criteria are met.

Patients should be actively involved in discussions throughout the whole process, with a clear understanding of their own Criteria for discharge and EDD.

The key to CLD is focusing on the patient, not the professional conducting the discharge.

## The Benefits

The evidence demonstrates that CLD results in:

- Reduced length of stay in surgical, paediatric and medical settings
- Reduced discharge delays
- Increased pre-9am discharges for elective surgery patients by 28%
- No increase in complications, readmissions or contact with primary care
- No reduction in patient satisfaction
- Increase in staff satisfaction.

Pilot areas for CLD have also experienced increased weekend discharges, resulting in a more even spread of discharges throughout the week.

## The CLD Process

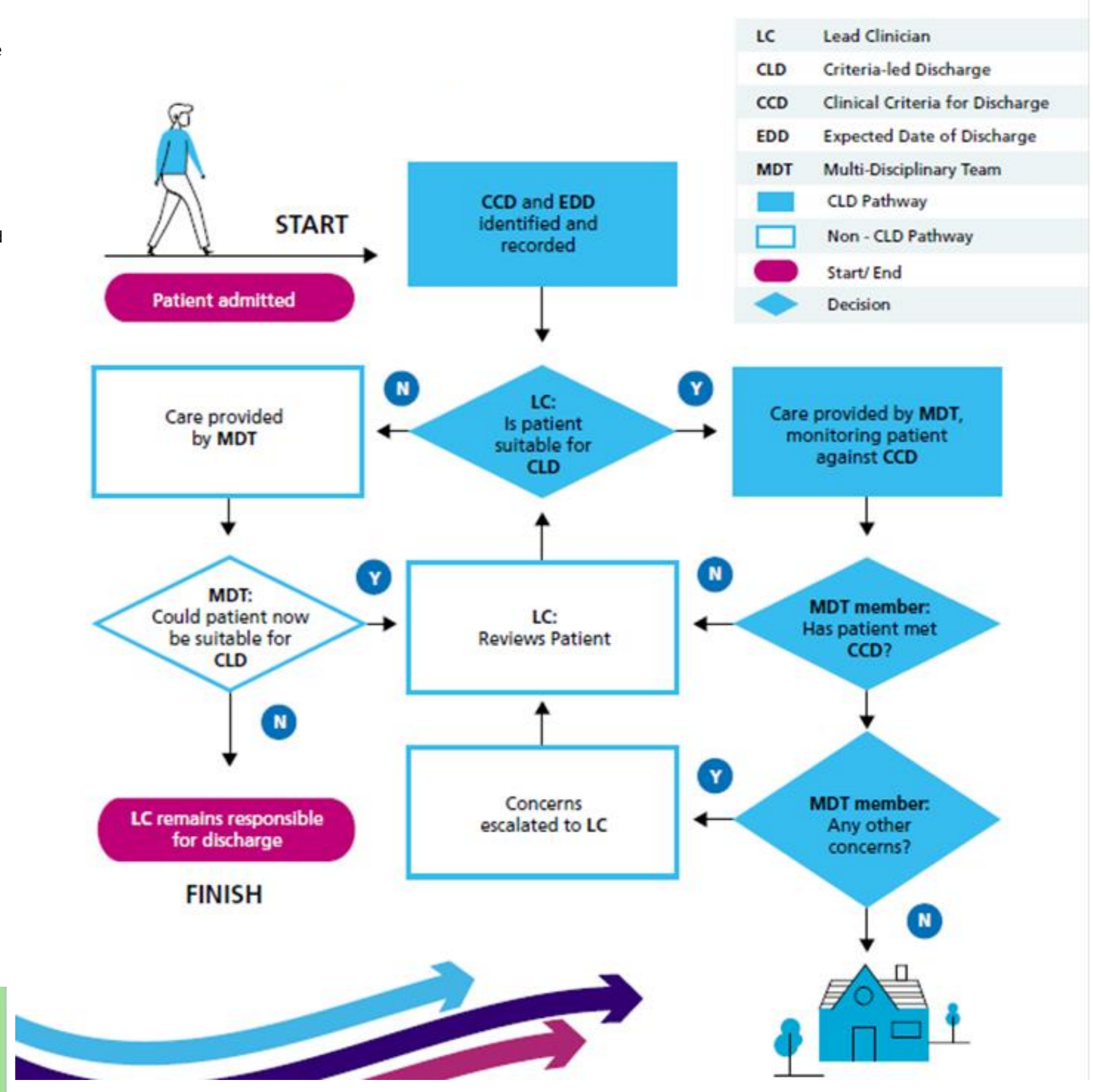
The 'MDT member' included in the flow chart (next page) could be a junior doctor, nurse, therapist or other health professional, as long as they are competent and confident in patient assessment and the CLD process.

The patient's Criteria for discharge and EDD should be set as early as possible: immediately for electives and as soon as is practical for emergency admissions.

It may be appropriate for members of the MDT to identify and propose possible CLD candidates for the lead clinician to review on the ward round.

Complications and concerns regarding CLD patients should always be escalated to the lead clinician who will then reassess the patient's suitability for CLD. If lead clinician finds that the patient is no longer suitable for CLD, strike one clear line through the CLD sticker and document reason for pathway.

Patients not initially identified for CLD should be observed to monitor whether changes to their condition make them suitable in their pathway



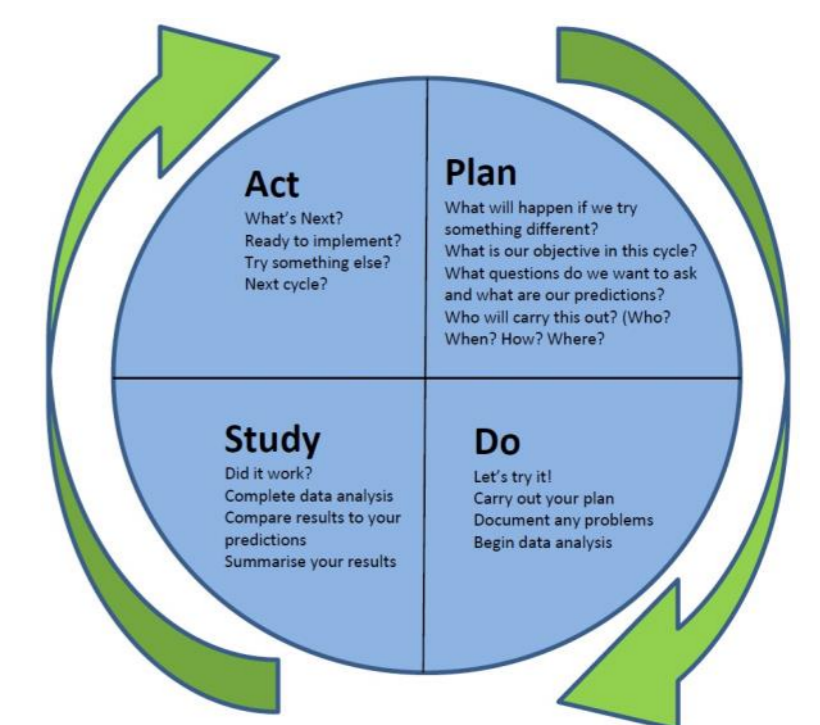
## Key Points:

TTO's" and "Discharge Summary" should be completed at the same time the CLD sticker is completed

CLD is for every day, not just Fridays!

CLD should be considered as early as possible in the patient's pathway

Ensure staff understand when to seek further medical review



## Criteria Led Discharge (CLD)

Patient's name		Hospital No:	
Consultant <span style="color: red;">Clearly identify the lead clinician responsible for the patient</span>			
CLD completed by			
Date CLD agreed DD / MM / YYYY	Signature	Print name	

The patient will be clinically ready for discharge if the following criteria are met. If there has been no change to their condition, they can be safely discharged with no further medical review required.

1. <span style="color: red;">Clearly identify SMART discharge criteria that is measurable and achievable</span> 2. 3. 4. 5.	Designated Discharge Officer Nurse <input type="checkbox"/> ACP/ANP <input type="checkbox"/> Dr <input type="checkbox"/> Therapy <input type="checkbox"/>
Additional comments	To be completed as part of CLD TTO's Discharge summary

To be completed by discharging person - Criteria for discharge met: Name <u>          </u> Document time of and MDT Date DD / MM / YYYY Signature <u>          </u> member conducting discharge Time 00 : 00 Nurse <input type="checkbox"/> Dr <input type="checkbox"/> ACP/ANP <input type="checkbox"/> Therapy <input type="checkbox"/>	If criteria are not met or results are outside agreed parameters further medical review must be sought.
--	---

TO BE FILED IN PATIENT'S HEALTH RECORD GHNHSFT/Y1998/12\_19 Review Date: 12\_22

Criteria Led Discharge (CLD) Timeline	Week 1	Week 2	Week 3	Week 4	Week 5	Week 6	Week 7	Week 8	Week 9	Week 10	Week 11																				
Medical Division Flow Group Tasked with Commencing CLD Sticker	█																														
Draft CLD Sticker PDSA Cycle 1		█																													
Draft CLD Sticker PDSA Cycle 2			█																												
Patient flow meetings				█																											
Funding support for CLD Trail requested from CCG					█																										
Discussed at Trust Flow Programme meeting						█																									
CLD Sticker. Sent to Therapy for approval							█																								
CLD Sticker. Approved by Therapy								█																							
CLD Sticker. Sent to Divisional Director of Quality & Nursing									█																						
CLD Sticker. Approved by Divisional Director of Quality & Nursing										█																					
CLD Sticker. Sent to Documentation group for approval											█																				
Funding support for CLD Trail approved by CCG												█																			
CLD Sticker. Approval from Documentation group													█																		
CLD Sticker sent to Colour Connect for final design														█																	
CLD Sticker final sent to Medical division flow group for approval															█																
CLD Sticker approved by Medical division flow group																█															
CLD Sticker. Discussed with EPR																	█														
Meeting with Ward managers and Matron for trial areas: GRH																		█													
Meeting with Ward managers and Matron for trial areas: CGH																			█												
Meeting with Ward managers and Matrons at Medical division sisters meeting																				█											
Go Live: FAS and 4th Floor wards																					█										
Teaching sessions: FAS and 4th Floor wards																						█									
Teaching sessions: Ryeworth Ward/Woodmancote Ward																							█								
Order information sent to all medical wards																								█							
Guideline sent for approval																									█						
Discussion with Comms. Plan arranged for cascade																										█					
Drop In session for all staff GRH/CGH																											█				
Go Live: Ryeworth Ward/Woodmancote Ward																												█			
Discussed at Trust Flow Programme meeting																													█		
Guidelines approved																														█	
Guidelines cascaded to all wards/Dr's Therapy																														█	
Go Live: Medical division																															█

