

Rotational Programme

INTRODUCTION

The following booklet provides a summary of the current Rotational Programmes on offer at BSUH.

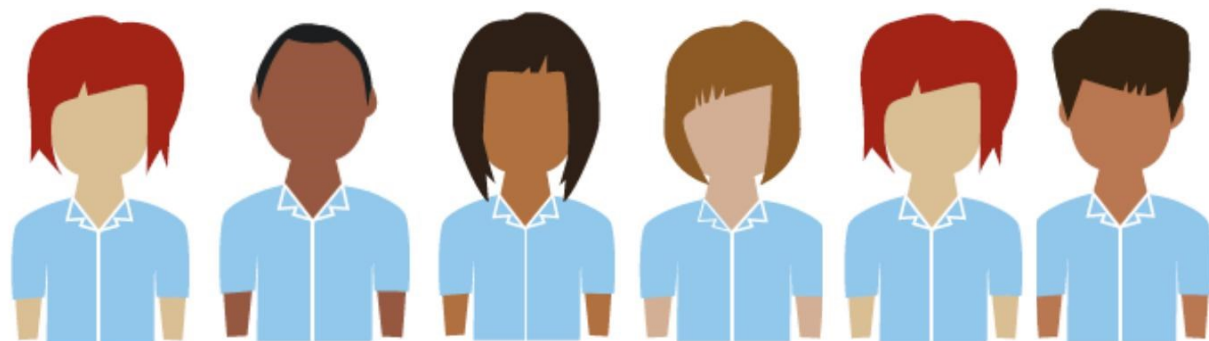
- ⇒ The programmes can be tailored to suit your individual needs and preferences plus this booklet will outline a list of current and previous rotations that we offer in the Trust.
- ⇒ The Rotational Programme includes in-house continuing professional development, careers guidance and support from the Matron for Workforce as well as speciality-specific training and development from Practice Development nurses, your Ward Leader and Head of Nursing.
- ⇒ The programmes are 18 month rotations (working for 6 months in each area following a chosen speciality-specific pathway.)

We are proud to offer the Rotational Programme to **all Band 5 Staff Nurses** at Brighton and Sussex!

CONTENTS

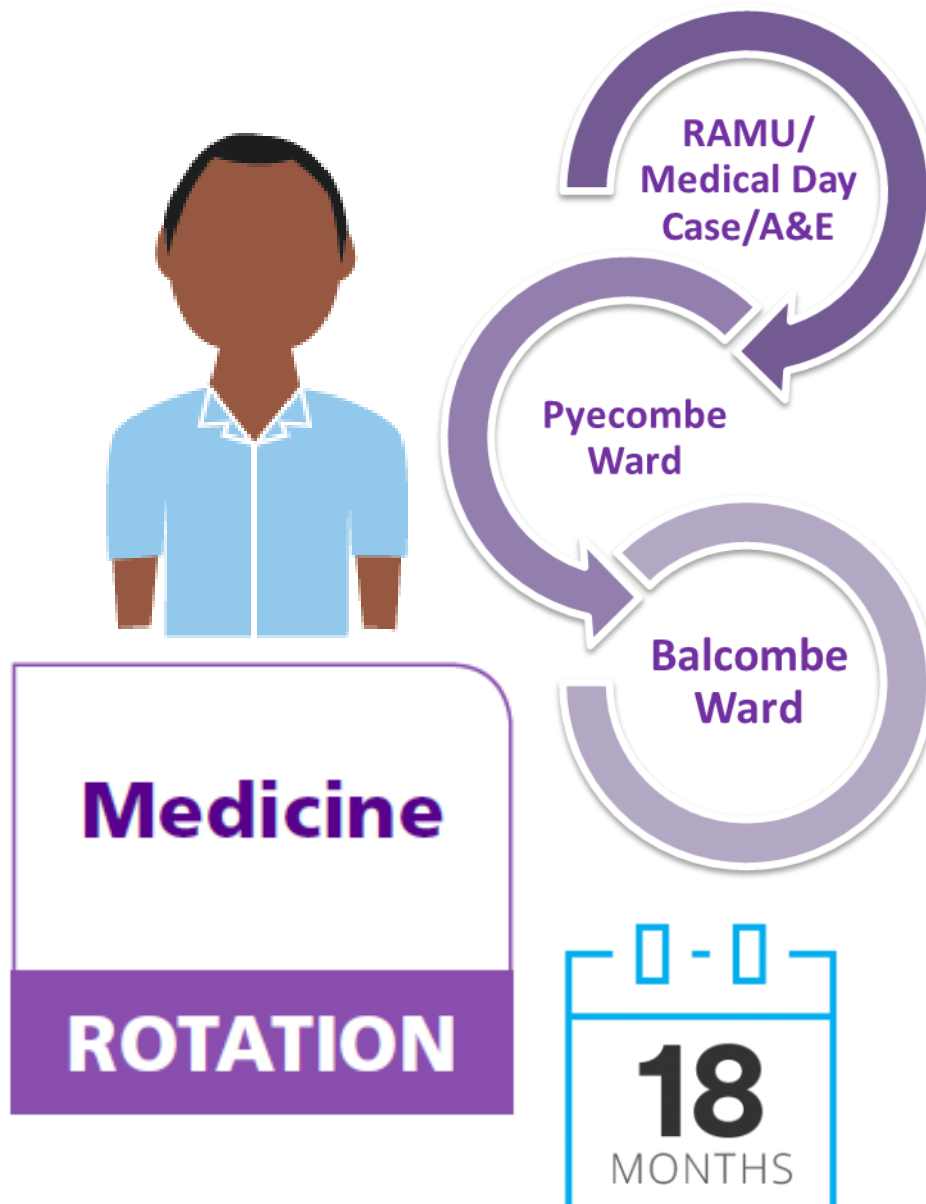
Acute Admissions Rotation
Medicine Rotation
Medical Speciality Rotations
Neuro & Spinal Rotation
Surgical Specialty Rotations

Whatever stage you're at in your nursing career, if you're an enthusiastic, hard working, competent professional we would love to work with you at BSUH to help you develop.



Safe, Cared for, Listened to

Rotational Programme



“We would love to hear from you!”

For further information or questions please contact David McKenna
Acute Floor Matron via email: david.mckenna4@nhs.net

Safe, Cared for, Listened to

[The Acute Floor at PRH comprises of the Emergency Department, Rapid Access Medical Unit, Medical Day Case Unit, Balcombe ward and Pyecombe Ward.](#)

We offer an 18 month rotation programme within the Acute Floor with six months in Emergency Care or this can be substituted with 6 months in Medical Day Case / Rapid Access Medical Unit, Respiratory Care, Cardiac and Endocrine Care.. Within these 18 months there will be a 6 week rotation (supernumerary) into the Intensive Care / high Dependency Unit to gain additional skills in NIV, tracheostomy care and other critical care skills. There are core and specific competencies for new staff to gain whilst in these different areas with further spoke developments as determined with the Practice Educator. All areas provide staff with the opportunity to provide individualised compassionate patient centred care for admission or complex discharge.. We offer a full local induction programme supported by a Practice educator. We use the Emergency Care Associations Competencies as a framework for staff pursuing a career in Emergency Care. To support this all staff rotate to the Children's Emergency Department for a 2 month supernumerary period to develop skills in caring for Sick Children. We further support staff gaining experience in Major Trauma by offering the opportunity for staff to rotate to the Major Trauma Centre at Brighton.

◆ *AGE/RAMU/Medical Day Case Unit*

The Emergency Department has been classified as a Local Emergency Department meaning that all major Trauma is seen at the Major Trauma Centre in Brighton. However, we remain a busy unit seeing a variety of acute medical and surgical presentations. We also see children with minor injury and minor illness presentations. We have a small 6 bedded Clinical Decisions Unit attached to the ED where patients requiring an extended period of monitoring or investigation may go to be later discharged home. We work closely with the Hospital Rapid Discharge Team and Mental Health Liaison team who are co-located within the Acute Floor setting.

RAMU (Rapid Access Medical Unit) is a small, friendly busy unit taking Medical referrals from GP'S, clinics and The Emergency Department. We see a wide variety of conditions and complaints, some of whom are admitted whilst others are discharged that day. We care for patients requiring Ascitic and pleural taps and drains. There is plenty of opportunity to develop acute assessment skills, care of the deteriorating patient, safe transfer and discharge skills. This unit is a fast paced area where you will develop the ability to prioritise your workload and think on your feet. We also run a Medical Day Case Unit that our staff rotates into. This unit see's all medical patient's referred for transfusions, infusions and procedures. We care for patients from a variety of specialities such as Gastro, Haematology, oncology, and endocrinology. You will learn a great deal about speciality conditions and therapeutic treatment. You will be offered the opportunity to continue your professional development whilst working within the Acute Floor as we run joint study days and in house simulations. We have a dedicated Practice Development Nurse covering the Acute Floor. You will have a concise set of competencies to work towards during your rotation to RAMU/Medical Day Case.

◆ *Pyecombe Ward (PRH)*

Pyecombe Ward, is part of the division of Medicine, which focuses on acute medical condition, more specifically on respiratory. However, patients usually have more than one condition and the hospital (PRH) doesn't have wards for all the different medical specialities so you will find other conditions as UTI, old CVA, renal failure, different types of cancer, etc. Pyecombe Ward is incredibly demanding and has experienced and knowledgeable staff who are friendly, enthusiastic and dedicated to share their skills and knowledge with all students. So we strive towards a positive learning environment by caring everyone with respect, listening to each other and working together as equals with a common goal. The team aim for the safe delivery of care, whilst adopting a calm approach, maintaining dignity and respecting patient's wishes but also have time to sit with those who need comfort. We are located on the ground floor, behind the Accident & Emergency (A&E) department. We have 27 beds arranged in to 4 male and female bays, with 6 beds each, and 3 side rooms. We have provision for 4-6 HD (high dependency) beds often used to step down patients from ITU (Intensive Treatment Unit).

◆ *Balcombe Ward (PRH)*

Balcombe ward is a 27 bedded acute medical ward, specialising in cardiology & endocrine, we have six dedicated cardiac monitoring beds plus 3 ambulatory monitors for patients. Apart from our cardiac patients we also a look after patients who are admitted with varied medical problems including DKA, Sepsis, heart Failure, Pulmonary Emboli, end of life to name but a few. Balcombe is a very busy ward but, it is a fantastic area to gain knowledge & confidence working in acute medicine, you will be supported throughout your time with us by our dedicated team of Nurses & all members of the Multi-disciplinary team.

◆ *PRH Intensive Care/High Dependency Unit*

During the Acute Floor Rotation, we will offer you the opportunity to undertake a 6 week placement on the PRH Intensive care/ High Dependency Unit. You will be supernumerary during this placement and have defined competencies to achieve. It will allow you to gain confidence with your patient assessment skills; understanding of blood gas analysis; haemodynamic monitoring and a range of respiratory support therapies and the chance to see the focus we have on commencing rehabilitation planning with the patients right from the moment of admission and the links this has with their ongoing care on transfer to the wards.

RAMU Senior Sister:

Mandy Cottingham

01444 441881

ext: 8676

Acute Floor Matron:

David McKenna

Acute Floor Practice Educator:

Charlotte Humphris

Pyecombe Ward Manager:

Nelson Sousa

01444 441881

Ext 8393/8394

Balcombe Ward Manager:

Lizzie Maddox

01444 441881

Ext 8390/8391

Head of Nursing—Medicine:

Ann Gibbins

Critical Care Matron:

Clare Hebditch and Clare McGregor

01444 441881

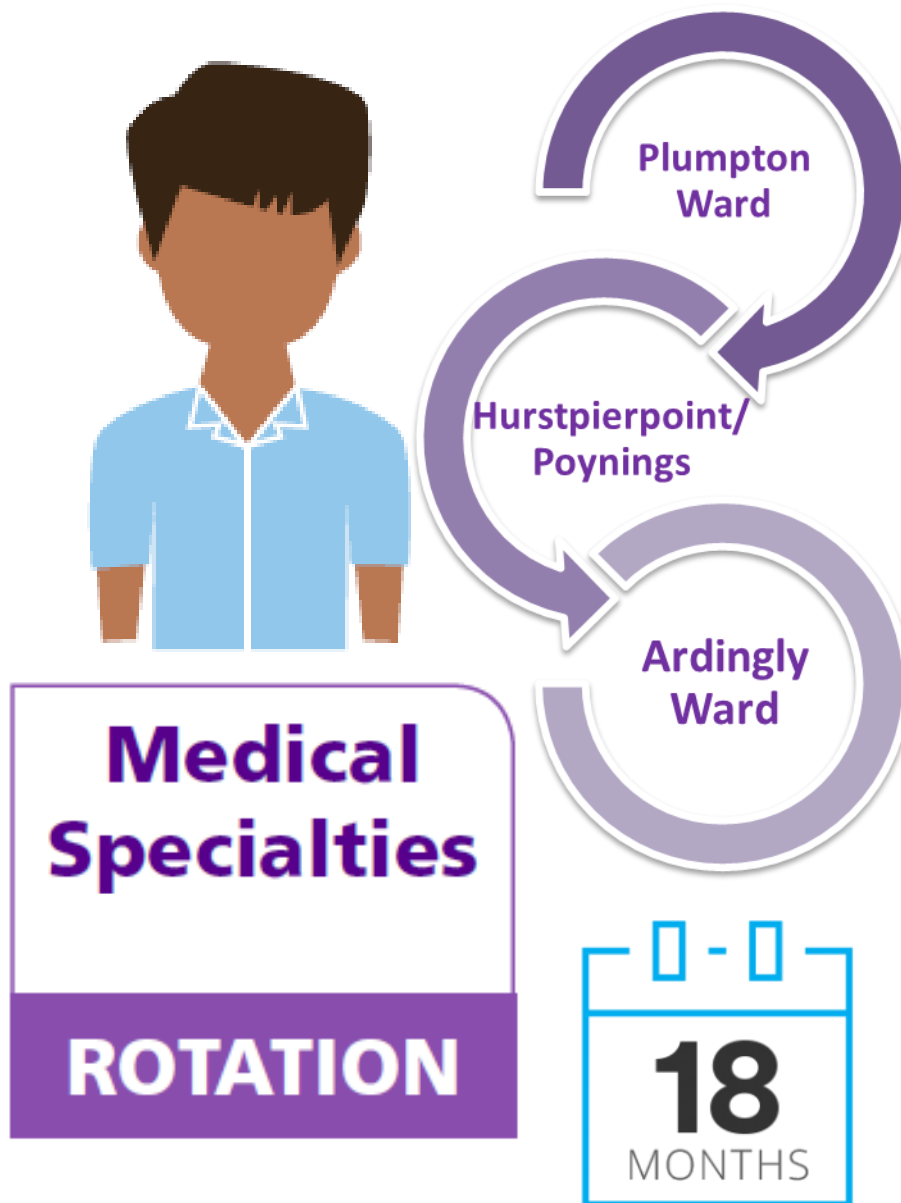
Critical Care Practice Educator:

Roy Johnson

Head of Nursing—Specialist:

Jim Valentine

Rotational Programme



“We would love to hear from you!”

For further information or questions please contact Jane Mason
Specialty Medicine Matron via email: jane.mason18@nhs.net

Safe, Cared for, Listened to

Plumpton Ward

Plumpton ward is an eighteen bedded medical ward that specialises in Complex discharge planning and End Of Life care. We also specialise in Sleep Apnoea studies, with additional patients visiting the ward for overnight for observation.

Within your rotation you will gain experience within the MDT, planning complex, specialised discharges from hospital, liaising closely with the hospital discharge co-ordinators, community services, Adult social care and GP's in order to plan for a safe and timely discharge.

You will gain specialist knowledge in complex discharge pathways, communication skills, rapid discharge pathway for the dying patient and specialised end of life care, as well as caring for acutely unwell medical patients and promoting rehabilitation for the transition from a hospital environment to the community.

The ward can offer a calm supportive environment to enable you to build on new skills, for example, venepuncture and cannulation, IV medication, Syringe Drivers, wound care including VAC dressing, diabetes care, Parkinson's disease including continual Subcutaneous infusions, Dementia care, Enteral feeding, Female and Male catheterisation and developing knowledge and understanding for the care of the dying patient. You will be fully supporting in your professional development by training via IRIS, regular appraisals and 1:1 meetings with the Ward Manager.

Hurstpierpoint Ward

Hurstpierpoint and Poynings unit is a 23 bedded acute medical ward. Poynings is a designated 8 bedded area for those patients that are clinically unwell but also have a primary diagnosis of Dementia. Working here you will gain a good knowledge of acute medical conditions and will be able to consolidate your clinical skills and develop them further. The ward promotes a calm supportive environment with plenty of learning opportunities, such as Venepuncture and cannulation, Catheterization, Syringe drivers, Bladder scanning, ECGS, Sample collections. You will also be encouraged to spend time with the Multidisciplinary team and the RMN on the ward.

We are a friendly team and welcome new staff members.

Ardingly Ward

Ardingly is an acute general medical ward with up to 22 beds. We care for patients with varied conditions. Many of our patients have acute on chronic illnesses including sepsis, due to urinary tract infections, respiratory infections and neutropaenia. We care for patients with anaemia, dysphagia, heart failure, falls, acquired brain injury, End of Life care and many more.

Ardingly offers a wealth of learning, developing new skills and where you will gain so much valuable nursing experience. Staff learn and become proficient at many skills, for example learning to cannulate, being able to use various pump and devices, place NG tubes, administer enteral feeds, care for complex wounds, including VAC dressings, catheterise and care of ascitic drains.

Our patients are assessed and given care and treatment by the MDT. Often our patients require further care or rehabilitation on discharge. We plan discharges from admission involving the patient, family and carers. You will have opportunity to gain specialist knowledge in this area.

You will be fully supported and mentored throughout your rotation. The Team prides itself on being friendly and welcoming. You be offered opportunity to attend study days and learning opportunities. We share our learning amongst the team and we appraise our staff regularly and keep them up to date with their progress. Ardingly is a fantastic place to work and a unique place to care.

Plumpton Ward Manager:

Lisa Holford

01444 441881

ext: 8099

Specialty Medicine Matron:

Jane Mason

Specialty Medicine Practice Educator:

Val Raavi

Hurstpierpoint Ward Manager:

Lisa Godfrey

01444 441881

Ext

Specialty Medicine Matron:

Jane Mason

Acute Floor Practice Educator:

Valaar Ravi

Ardingly Ward Manager:

Position vacant

01444 441881

ext

Specialty Medicine Matron:

Jane Mason

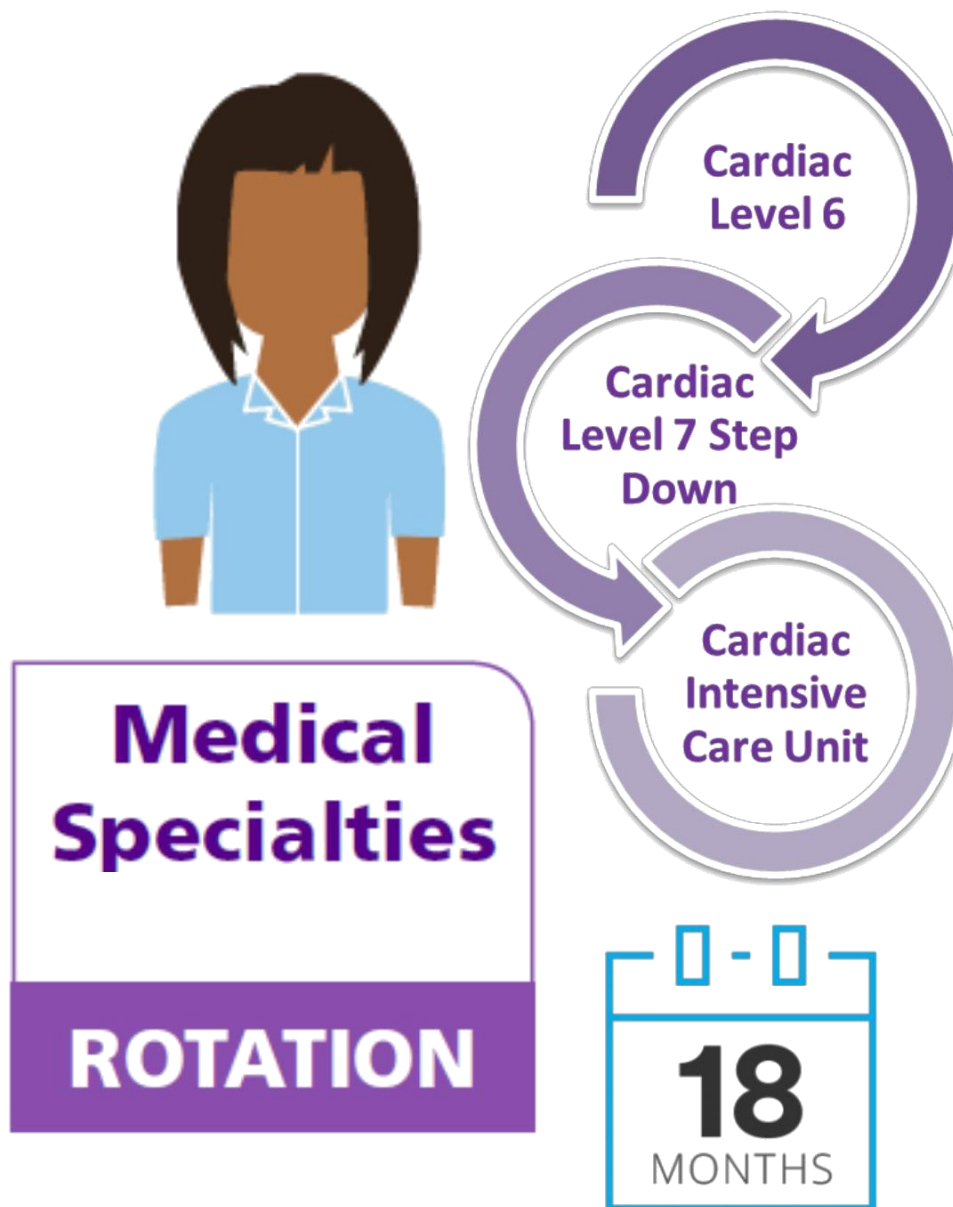
Acute Floor Practice Educator:

Valaar Ravi

Head of Nursing—Medicine:

Ann Gibbins

Rotational Programme



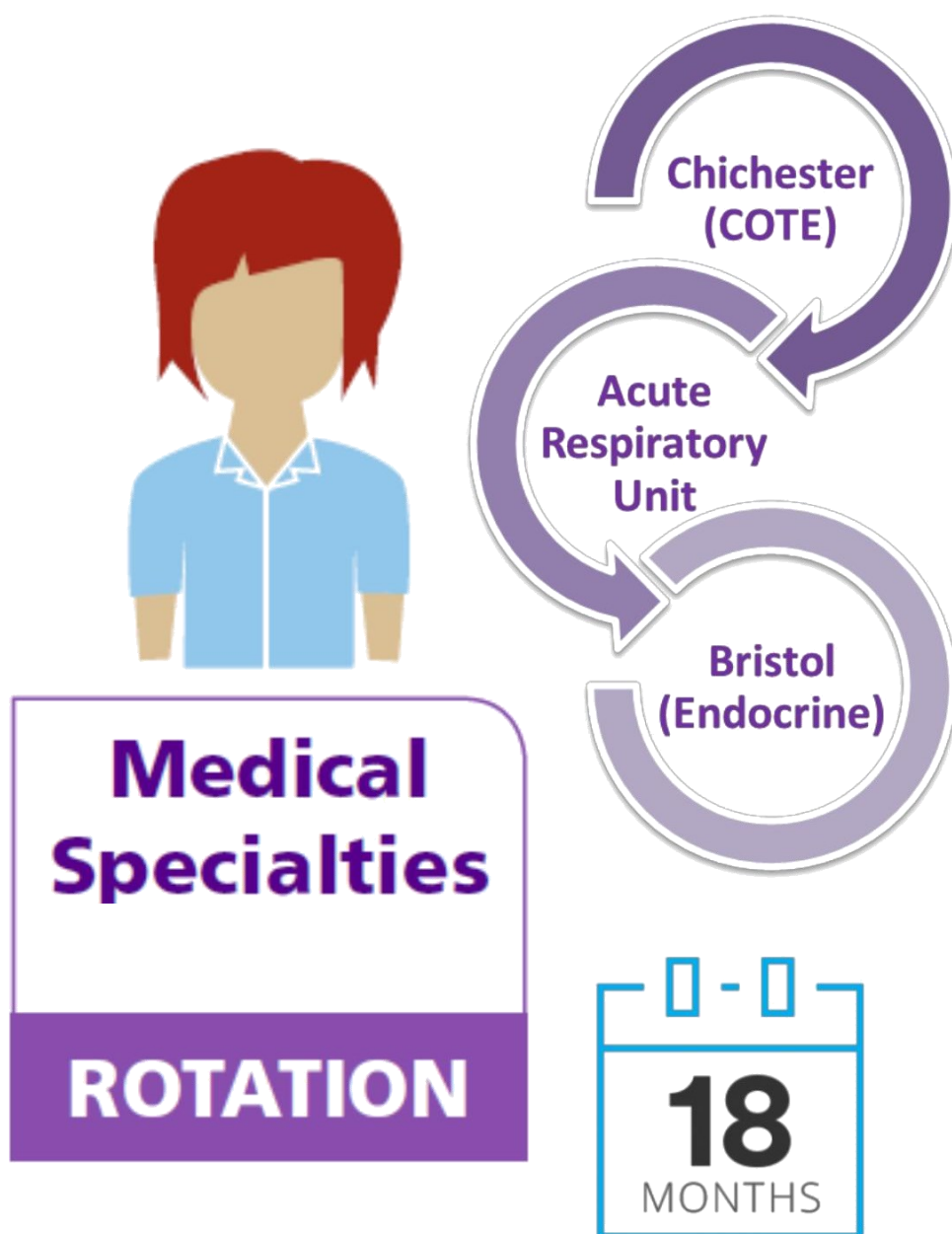
“We would love to hear from you!”

For further information or questions please contact Ruth Tollyfield

Cardiac Matron via email: ruth.tollyfield@nhs.net

Safe, Cared for, Listened to

Rotational Programme

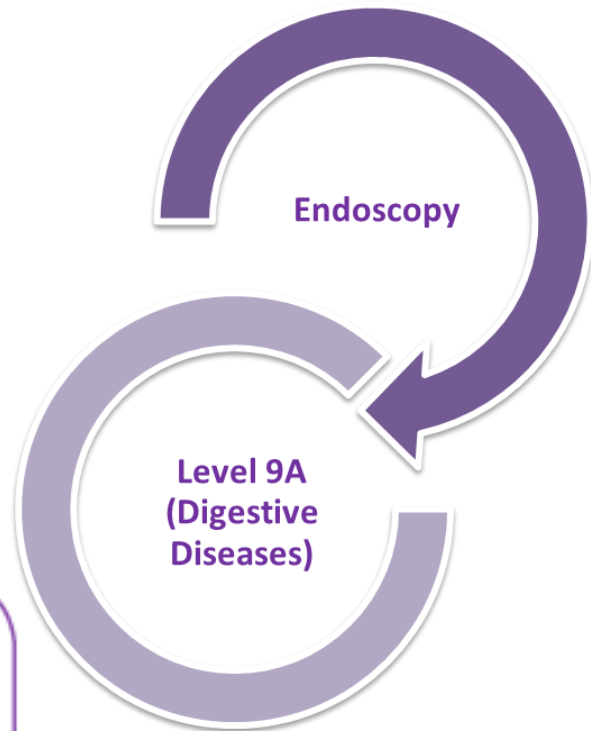
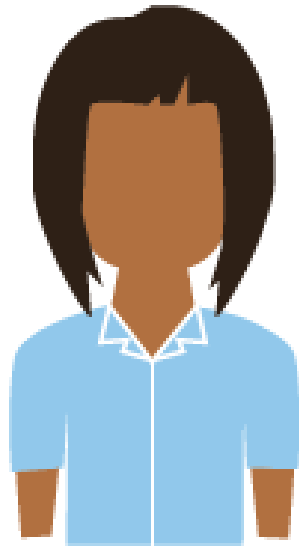


“We would love to hear from you!”

For further information or questions please contact Linda Hooper
Speciality Medicine Matron via email: linda.hooper1@nhs.net

Safe, Cared for, Listened to

Rotational Programme



**Surgical
Specialties**

ROTATION



“We would love to hear from you!”

For further information or questions please contact Lucy Pitt or Julie Hutchinson
Surgical Matrons via email: lucy.pitt4@nhs.net
or julie.hutchinson7@nhs.net

Safe, Cared for, Listened to

Surgical Specialties OPTION A

ROTATION

Endoscopy Department Manager:

Janet Bates
01273 696955
ext 67695

Endoscopy Matron:

Julie Hutchinson
07500 558958

Endoscopy Practice Educator:

Tanya Kennedy
ext 3476

Level 9A Manager:

Sam Harden/Emma Hart
01273 696955
Ext 7224

Digestive Diseases Matron:

Lucy Pitt
07557758706

Digestive Diseases Practice Educator:

Sue Dawson/Sonia Blundell
01273 696955
Ext 7951

Head of Nursing—Surgery:

Kimberly O'Hara
07977002052

◆ Endoscopy (RSCH)

We are an experienced, skilled and friendly team nursing team who provide frontline endoscopic diagnostic services to our local population, both as outpatients and inpatients.

We routinely undertake a wide variety of Endoscopic procedures including, colonoscopies, gastroscopies, PEG insertions, E.R.C.P's, and Bronchoscopies. Most of the procedures undertaken are planned but we also provide an emergency service too.

The role of the Endoscopy staff nurse is varied and skilled, encompassing the complete patient pathway in which you will be fully trained to work, in the outpatients department, the pre-assessment area, the procedure rooms, recovery and discharge area.

The Endoscopy Nurse Educator and wider nursing team will offer full support and training, utilising the comprehensive endoscopy unit training package as well as imparting their own knowledge and expertise. We welcome informal visits to the department.

◆ Level 9A (RSCH)

We are a dedicated, diverse and committed team caring for patients with acute abdominal conditions requiring surgery or medical management.

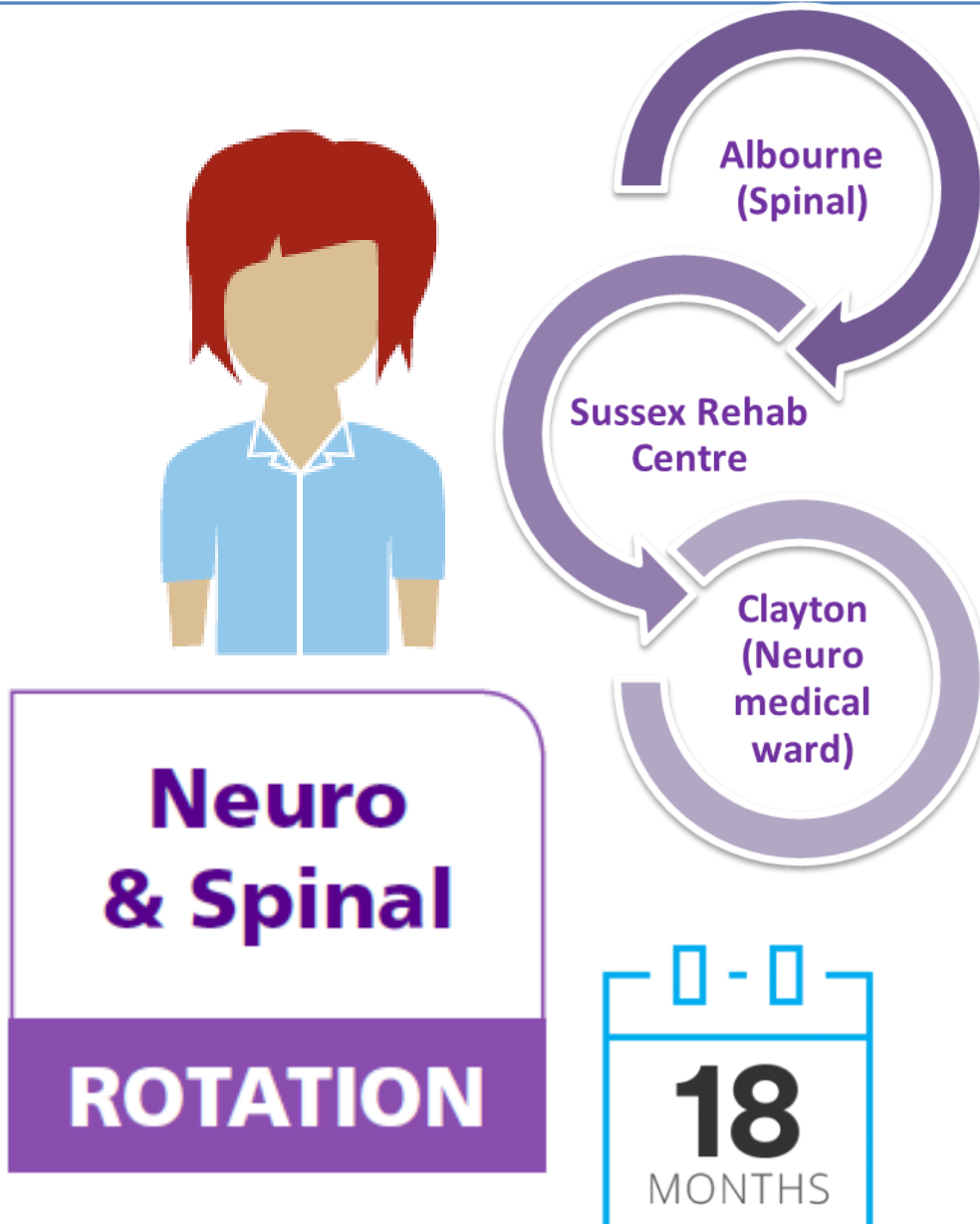
We care for a wide range of surgical emergencies, including trauma patients. The majority of our patients are emergency admissions or step down patients from ICU & HDU. We also have Enhanced Recovery Pathways for Oesophageal and Colorectal surgery.

Level 9A is not just a great place to start your career as a newly qualified band 5 nurse; it is also a great place if you are looking for a new challenge or a change in direction. You will be exposed to a wealth of learning opportunities. We have a fantastic team of experienced nurses willing to impart knowledge and support you to deliver care at a high standard.

You will gain a range of clinical skills; you will become proficient in care and management of enteral feeding tubes, PICC/CVCs, parental nutrition, chest drains, epidural and PCAs, complex wounds and stoma management.

We have two Practice Development Nurses committed to meeting your educational needs within this speciality as well as your overall career progression. You will receive a comprehensive induction programme and 1:1 clinical support. You will have the opportunity to apply for the Care of the Critically Ill Patient module once you have completed your Band 5 competencies.

Rotational Programme



“We would love to hear from you!”

For further information or questions please contact Emily Spence
Practice Development Nurse (Neuro) via email:
emily.spence1@nhs.net

Safe, Cared for, Listened to

♦ Albourne Ward

Albourne is a 15 bedded elective surgical ward, made up of 11 Spinal and 4 Orthopaedic beds. The ward consists of 2 bays each with 6 beds and 3 side rooms. The ward is in the Stroke and Neurosciences Directorate post reconfiguration of Neuro services in BSUH Trust. Our operating Consultants and Junior Doctors are from both Neurological and Orthopaedic specialities. Albourne ward is located on the first floor of the main ward block at the Princess Royal hospital, Haywards Heath.

The staff on Albourne ward recognise that each patient is a unique individual with complex needs. Our vision is to create a friendly environment of support, respect and consideration for all patients, colleagues and visitors. Our care will be of a consistently high quality, and will be delivered by a team who have special interest in spinal and orthopaedic surgery. The staff are innovative, caring and professional, continually developing in order to ensure standards are maintained and practice is evidence based.

♦ Sussex Rehab Centre

Lindfield Ward is one of two wards that make up the Sussex Rehabilitation Centre. Our sister ward is Newtimber Ward and is situated on the same floor. We share many of the same facilities and our therapy staff operates across both wards. We have 21 beds arranged in to 2, 6 bed bays and 1, 5 bed bay with 4 side rooms. The ratio and placing of male and female beds can change according to the ratio of male/females admitted to the unit at any one time. Newtimber ward is one of two wards that make up the Sussex Rehabilitation Centre. Our sister ward is Lindfield Ward and is situated on the same floor. We share many of the same facilities and our therapy staff operates across both wards. We have 18 beds arranged in to x2 6 bed bays and x1 5 bed bay with 2 side rooms. The ratio and placing of male and female beds can change according to the ratio of male/females admitted to the unit at any one time.

Lindfield Ward is part of the division of neurosciences which focuses on neurological rehabilitation following an acquired brain injury (traumatic brain injury, stroke, CNS infection, or CNS tumours) or spinal injury. Patients are assessed by the multi-disciplinary team for goal setting and management of their disability. Their length of stay is from 6 – 12 weeks depending on the patient achieving their set goals and there is continuous assessment towards on-going care in the community. The nurses work very closely alongside the many therapists to ensure cohesive care and full optimization of goals. Lindfield Ward care for Patients with Tracheostomies.

Neurorehabilitation nursing is both challenging and rewarding due to the nature of the patients and their changing needs throughout their journey of rehabilitation. The staff are friendly, caring, skilled and knowledgeable. We aim to provide a positive learning environment for everyone joining our team. The team, including all therapists, aim to treat all they care for with dignity and respect. We pride ourselves on providing a calm environment and always respect patient's wishes and treat all as individuals.

♦ Clayton Ward

Clayton ward at the Princess Royal Hospital to Albourne ward to Neurorehabilitation at the Sussex Rehabilitation centre, PRH. This rotation would support a nurse in understanding a wide range of long-term neurological conditions, spinal surgery and neurological rehabilitation. All of these areas are based at the PRH and would benefit a nurse wishing to work on one site only.

Albourne Ward Manager:

Helen Beckett

01444 441881

ext:

Neuro Matron:

Nathalie Pearson and Jo Simpson

Neuro Practice Educator:

Emily Spence

SRC Manager:

Caroline Browne/Nadine Richards

01273 696955

Ext

Neuro Matron:

Nathalie Pearson/Jo Simpson

Neuro Practice Educator:

Emily Spence

Clayton Manager:

Cynthia Naish

01273 696955

ext

Neuro Matron:

Nathalie Pearson/Jo Simpson

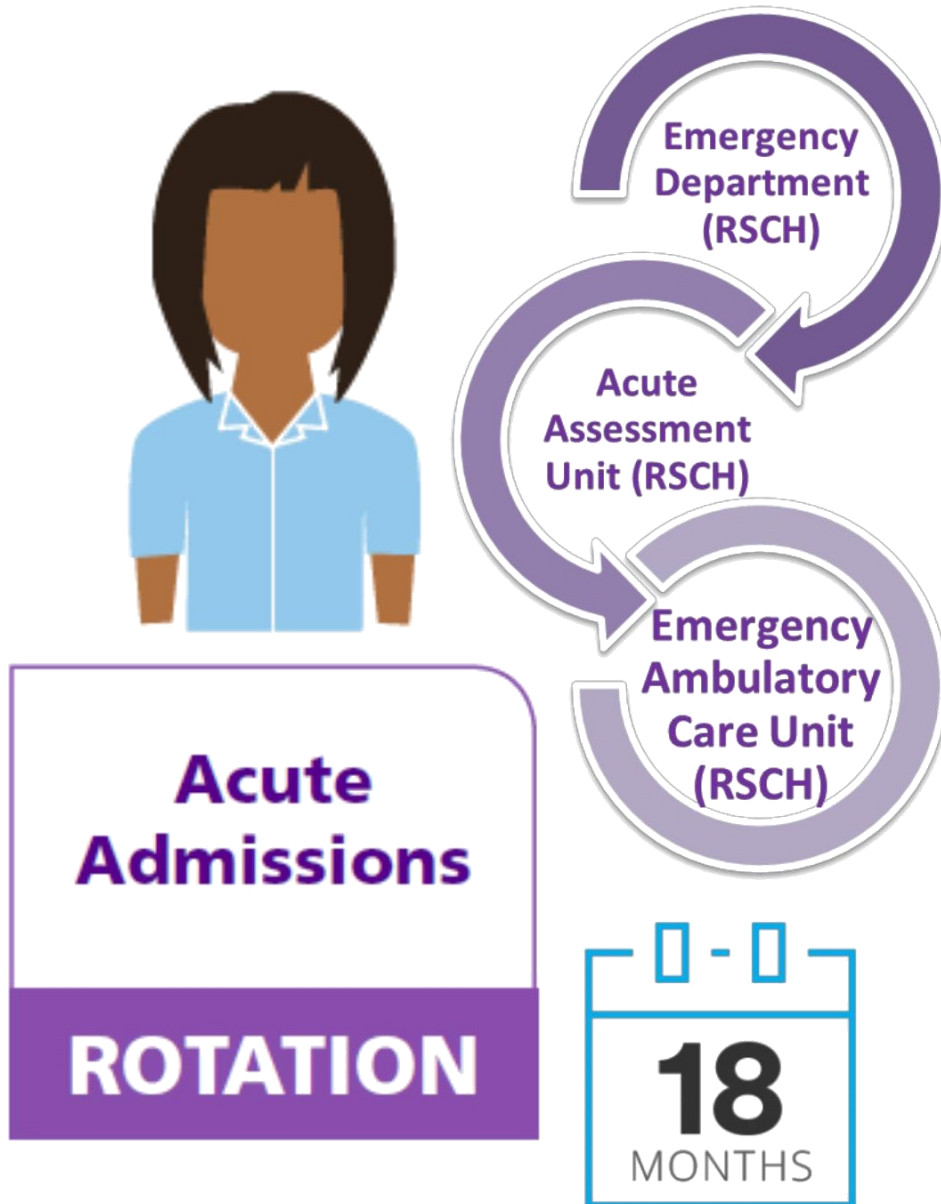
Neuro Practice Educator:

Emily Spence

Head of Nursing—Specialist:

Jim Valentine

Rotational Programme



“We would love to hear from you!”

For further information or questions please contact Sarah Fry
Practice Development Senior Sister (A&E RSCH)

via email: sarah.fry4@nhs.net

Safe, Cared for, Listened to



"We would love to hear from you!"

For further information or questions please contact Emma Symes
Matron for Workforce or Melanie Armstrong, Practice Development
Senior Sister for Preceptorship and Retention via email:

bsuh.preceptorship@nhs.net



Safe, Cared for, Listened to